

Fueling System and Tank Farm S.O.Q.



Delta Western POA Tank Farm

Provided the design for a 300,000-barrel tank farm including rail and truck loading / unloading. 2011 to present.

Shoreside Seward Tank Farm



Provided the design for a 150,000-barrel multi-fuel tank farm including rail and truck loading / unloading and a shore facility. 2012-2017.

Port of Alaska Modernization Project



GNE was part of the three company design team to lead the Port of Alaska Phase I Modernization Project. 2017 to present.

With more than 37 years of engineering and design experience in Alaska and the Pacific Northwest, Great Northern Engineering, LLC (GNE) is familiar with, and appreciates the need for, quality engineering and construction in an arctic environment. Project budgets range from \$15,000 to over \$50 million.

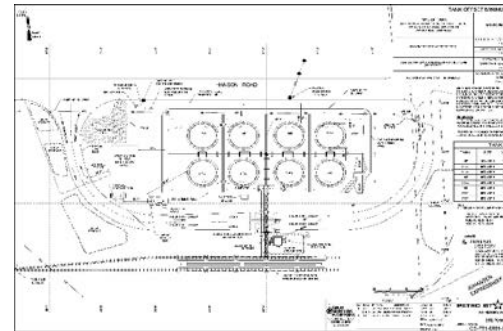
GNE Project Capabilities:

- Project Management, Contractor Selection
- Project Controls and Schedule Planning
- Geotech and Survey
- Civil and Site Prep
- Structural and Foundations
- Architectural and Code Analysis
- Mechanical, Tanks, Piping, and HVAC
- Pipelines and Transmission
- Truck and Rail Loading / Unloading
- Utilities and Tie-ins
- Electrical and Instrumentation
- Control Systems and SCADA
- Permitting
- Constructability Reviews
- Construction and Field Engineering Support
- Startup, Commissioning, and Turnover
- Facility As-builts
- O&M Documentation, Spare Parts
- Personnel Training
- HAZOP, SimOps, Cause & Effect, QA/QC
- API 520, 521, 570, 537, 650, 653, 1169, 2000, SPCC, STI SP001



Ted Stevens International Airport

Provided the designs for more than 50 projects at Ted Stevens International Airport including the 300,000-barrel Jet-A storage facility and fueling system. 1994 to present.



Fairbanks Rail & Truck Terminal

Provided the design for an 80,000-barrel tank farm including rail & truck loading / unloading. 2016 to present.



Fairbank LNG Plant and Facility

Provided the mechanical, piping, and structural design for the Fairbanks LNG Plant. 2017 to present.



Marathon Petroleum Multi-Projects

Provided designs for more than 40 Marathon, Tesoro, and Andeavor Facilities across Alaska. 1992 to present.

Fueling System and Tank Farm S.O.Q.



Mente Aviation Fueling System
Provided the design for a new state of the art aviation fueling system at the King County Airport. 2015-2017.



Chevron Bulk Fuel Storage Facility
Provided the design for the Chevron Port of Alaska 680,000 tank farm including rail loading. 1997-2011.



Vapor Combustion Units
Provided the designs for several fueling facility Vapor Combustion Units (VCU) across Alaska and the Pacific Northwest. 2012 to present.



CPAI Alpine Jet Fuel Facility
Provided the design for a large expansion to the Alpine Unit Jet-A tank farm and fueling system. 2016-2018.



Remote Fueling Systems and Tank Farms
Provided designs for multiple tank farms and fueling systems across rural Alaska including the new Teller Village bulk fuel facility. 1995 to present.



Port of Alaska Valve Yard
Provided the POAVY expansion design and designs for all subsequent modifications. 1994 to present.



Ted Stevens International Airport
Provided the designs for more than 25 projects at Sea-Tac International including the primary tank farm and fueling system. 1994 to present.



Palmer Station Pier Replacement
Provided the design for a new pier and shore facility at Palmer Station on Anvers Island, Antarctica. 2015-2017.



Port MacKenzie Tank Farm
Provided the design for the Port MacKenzie Tank Farm and other site facilities. 2010 to present.