



# GREAT NORTHERN ENGINEERING

## Project History

**Project Title:** Light Vehicle & Heavy Equipment Maintenance Shop

**Client:** Price Gregory International / Conam Construction

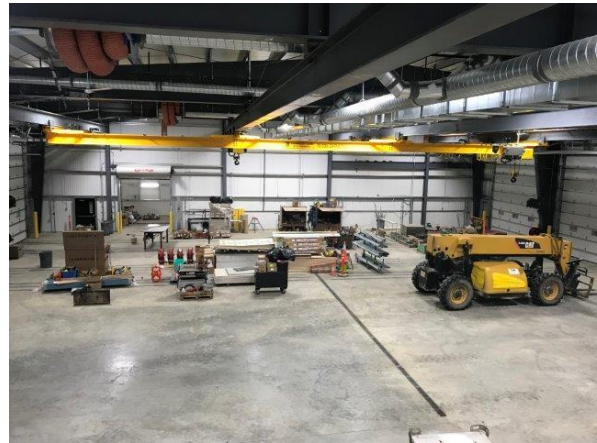
**Location:** Deadhorse, Alaska

### Project Scope:

Great Northern Engineering was contracted by Price Gregory International and Conam Construction to design a new, state of the art Heavy Equipment and Light Duty Truck Repair and Maintenance Shop in Deadhorse, Alaska. The new facility was tied into the existing light duty shop and demo plans were created for removal of the existing heavy equipment shop.

### Project Details:

- The Turnkey Scope of Work included site layouts, code analysis, and all engineering disciplines including CSA, mechanical, and electrical.
- The 19,000 ft<sup>2</sup> shop included (8) bays for maintenance and repair, an enclosed equipment wash bay, FLOPS storage, parts mezzanine, locker room / bath rooms, laundry room, conference room, lunch room, and offices.
- The new shop included an arctic foundation design, gen-set, vehicle exhaust system, gas detection system, 10-ton bridge cranes, lube oil and compressed air system, sprinklers, water storage & water recycle system, HVAC, mechanical and electrical rooms, telecom / IT, potable and waste water system, and all furniture / fittings.
- Modifications to the existing light duty shop included all utility and structural tie-ins, and extensive improvements to the HVAC system.



## Great Northern Engineering *Consulting Engineers*

137 E. Arctic Ave., Palmer, Alaska 99645

e-mail: [general@gne-ak.com](mailto:general@gne-ak.com)  
[www.GreatNorthernEngineering.com](http://www.GreatNorthernEngineering.com)

Palmer (907) 745-6988  
Fax (907) 745-0591

Anchorage (907) 561-0200